



# TROWEL TALK

Published by the Masonry Institute of Dayton

**37th Annual Awards Program**

Josh R. Naragon, Executive Director

**2010 Winners and Judges' Comments**

## **Excellence in Masonry Salvation Army Ray and Joan Kroc Corps Community Center**



### **Architect**

**John Poe Architects, LLC**

Ken Raiteri, left

### **Mason Contractor**

**Hagerman Construction**

Chad Eber, right

Rarely does a design jury have the pleasure to review, evaluate and discuss the appropriate award to recognize a truly outstanding piece of architecture. Such was the case with our jury and the Salvation Army project.

The fact that at whatever scale they evaluated this project, beginning with the strength of concept for the planning and development of the site and continuing down to execution and detailing of the soaring interior space, this project rose to a level of excellence that warranted the

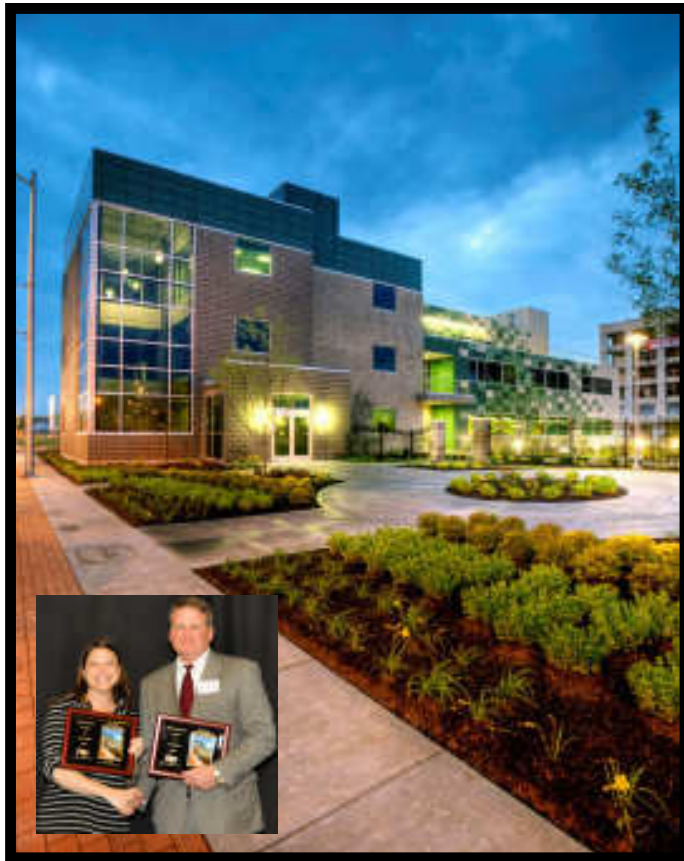
bestowing of a First Honor Award.

The organization of the various elements around a beautifully-landscaped courtyard speaks to the concept of "community" ... certainly a worthy label for a project that allows the client to provide many worthy services to the Dayton community. This courtyard space serves to provide a sense of unity among the assembled buildings, each one of which is comprised of very expressive, sculptural forms.

Even more important in achieving this sense of community, is the role that masonry plays in visually connecting each building and the architect's skillful handling of a limited palette of materials. The solidity inherent in the masonry ... whether expressed in walls or piers ... serves to anchor the "soaring" roof forms that are consistently reinforced by well-considered and detailed fascia/soffits assemblies clad with a metal panel system. The use of masonry on the interior is no less impressive when one studies the workmanship required and evident in the cladding of the sweeping form that provides the iconic symbol for the complex. But the jury also noted its use

in the elegant and well-detailed, smaller spaces. Based on all the aforementioned aspects, this is a project very worthy of the Excellence in Masonry Award.





## Honor Design Award Creative Technology Accelerator

**Architect**

**The Architectural Group, Inc.**

Dianna Conboy, left

**Mason Contractor**

**Anderson Masonry Co.**

Brian Watts, right

This project provides a good example of which a jury must look closely at the roles masonry plays in allowing them to feel confident in bestowing an award, especially an Honor Award.

Upon first review it was other aspects of the building that captured the jury's attention, especially the images conveyed in the night shots. However, upon closer inspection and discussion, the jury came to the conclusion that this building truly fulfills Criteria for Evaluation No. 4, that being: RECOGNIZE THE FULL RANGE OF "APPROPRIATE

USES" of masonry in terms of it being a *primary material* system used or a *secondary material* system that complements another material system that logically is used as a primary material system.

At the urban design, site development and landscape-hardscape scale, the jury lauded the strong articulation that the masonry paving strip at the sidewalk gives in defining the site as well as its use as a highlight element in the hardscape of the parking lot.

However, more striking was the urban design response to addressing and handling a corner site of what appears to be a desolate streetscape. By using a portion of a cylindrical form and cladding it in brick, the architect creates a sense of a protective wall that, when it terminates in a three story-high window wall the corner allows for a visual hint of the landscape plaza that lies beyond it. Upon rounding the corner, the brick wall returns to add solidity to the main entrance. The non-ornamented "punched opening" windows add to this sense of solidity and protection.

The entire composition of these façades is tied-together by a substantial cornice, constructed of a dark-green, metal-paneled system that transforms into a very playful, window-wall, art mural.

Lastly, the architect chose to carry the masonry into the interior of the building. Continuing restraint as a concept, this only occurs where the tower elements carry into the building.





## Honor Design Award Greater Dayton Recreation Center at Roosevelt Commons

### Architect

Lorenz Williams  
Incorporated

John Fabelo, left

### Mason Contractor

PCC Masonry, Inc.

Bill Twining, right

This building really impressed the jury for its “eye-catching” expression in terms of the building’s relationship with the land(scape). Obviously, this dynamic expression is achieved by the canted forms clad in a glass curtain wall.

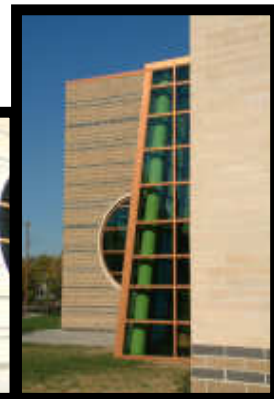
However, their strongest kudos for the architect were based on the manner in which they employed the simple, “box-like” forms clad in masonry to act as the “anchor” that ties the composition of forms to its site. It is the inherent qualities in masonry of solidity and durability that truly elevates this building above so many.

These are the buildings that over-manipulate forms and the range of materials used so that their sculptural composition has no sense of repose or being grounded.

Adding to the jury’s very positive reaction to these forms is the very-well designed placement and pairing of courses of different colors of brick. This subtle design element imparts a human scale to these forms.

These are the buildings that over-manipulate forms and the range of materials used so that their sculptural composition has no sense of repose or being grounded. The jury also felt that the interior was well handled and gained a sense of unity with the exterior by the well-chosen locations, placement and detailing of masonry .

In concluding their remarks, the jury noted that this building imparts a certain “youthful spirit” ... a good feeling they felt for a rec building, regardless of the age of the users.



## Merit Design Award The Welcome Stadium Renovation



### Architect

**Lorenz Williams  
Incorporated**  
John Fabelo, left

### Mason Contractor

**Anderson  
Masonry Co.**  
Brian Watts, right

This project of limited scope provided the jury with a good example of applying the criteria that, regardless of size or context, good design can be realized.

The jury enjoyed the way the architect reinterpreted a time-honored tradition dating back to the Greeks and Romans of using open arcade defined by a colonnade to gather people who arrive at dispersed location on a site (in this case the parking lot) and are then guided to a very specific entry point.

This function is reinforced by the centrally-located, semi-circular, colonnaded element announcing that entry point. Two other strengths of this project are the extensive use of masonry pavers as well as the well-thought-out and skillfully-crafted detailing that help to both articulate and give scale to the basic structural elements of post and (lintel) beam through the recessed courses and soldier course, respectfully.

The jury felt obligated to offer a modest suggestion and that would be to begin a process of landscaping the parking lot so as to create a much more aesthetic and sustainable environment as the foreground for the stadium entry.





## Merit Design Award Meadowdale High School

**Architect**

**Fanning/Howey Associates, Inc.**

accepting for Fanning/Howey, John Carr, Dayton City Schools, left

**Mason Contractor**

**PCC Masonry, Inc.**

Bill Twining, right

The jury felt that this school demonstrates how in the hands of a good designer masonry can provide a strong aesthetic that both helps to unify a composition of many diverse forms while also contributing greatly to a range of design statements on various façades.

More specifically, the jury noted how the design of the brick work reads like super-scaled murals, each one adding a unique design statement within a limited palette of colors.

The use of masonry on the interior demonstrates a recognition of the diversity of applications that solve pragmatic problems, while also providing aesthetic statements.

This accomplishment is made all the more laudable, given the fact that the jury had a strong feeling that this building dedicated to a public secondary education building was brought in on a rather tight budget.





## Merit Design Award JSP Joint Fire District

**Architect**

**McCall Sharp Architecture**

Ed McCall, left

**Mason Contractor**

**Anderson Masonry Co.**

Brian Watts, right

This project, maybe more than any other, engaged the jury in “very spirited dialogue” which even became quite academic when Robert Venturi’s concept of the “decorated shed” entered the discussion.

It became quite obvious after the initial run-through of photographic images that the front façade expressed a totally different esthetic ... or “architectural style,” if you will ... than the rest of the building. However, this building typology truly does challenge the architect to deal with major functions ... a “house” for the firefighters and multiple garages to house the apparatus which also includes the myriad of support facilities.

The jury lauded the manner in which both styles were handled with the front elevation being very well scaled and detailed in a Pseudo-Colonial style. In contrast, the apparatus-focused element to the rear employs an esthetic that conveys a “no-nonsense” utilitarian building ... quite appropriate.

Interestingly enough, it is masonry that provides the unity of esthetic expression on the exterior while also providing very low-maintenance and durable walls on the interior.



*Thanks to our Event Sponsors*

Bricklayers Local 22  
Bryce Hill, Inc.  
Laborers' Local 1410  
PCC Masonry  
Snyder Brick & Block





**TROWEL TALK**

Masonry Institute of Dayton

P.O. Box 130

Bellefontaine, Ohio 43311